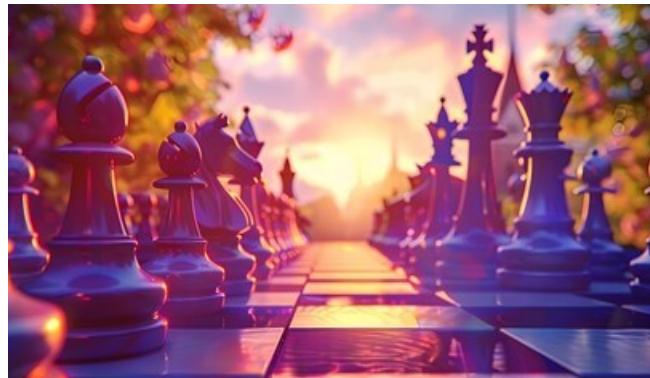


JULY HEAT CHESS Tournaments

Scholastic K-12 & USCF Open
Adults welcome.



Saturday, July 11, 2026

Scholastic: K-12 students with beginner's section.

USCF Open: Scholastic and Adults.

Awards are presented to winning players and school teams.

Tournament Directors: John Dill II and Craig Moore

Location: **St. John Vianney School**

501 N. Walnut Rd., Spokane Valley, WA 99212

Register: eMail, phone, or text. Then pay at tournament.

Include player's name, school, and grade.

reg@inlandchess.org **Phone or text:** 509-822-9800

Fee \$25: Early registration fee: **\$25** by 6:00 pm, Friday, July 10.
Pay at tournament. Late registration and walk-in fee: **\$30**
\$1 of each registration fee is donated to the scholarship fund.

Scholastic Schedule & Format: Check in 9:00 am to 9:30 am.

- Five round Swiss. G/30. First round begins at 10:00 am.
- Players arriving after 9:40 am will not be paired in the first round. All students play all five games. Rounds 2-5 will begin soon after the completion of the last game of the prior round.
- The scholastic division will have a beginner's section and one or two other sections.
- Sections are determined by the directors depending registration.
- The raffle and award ceremony immediately follows completion of fifth game.
- Awards are usually completed before 4:00 pm.

USCF OPEN Format & Schedule:

- The OPEN welcomes all players, scholastic and adults. Four round Swiss, G/40 d/5.
- Games: 10:00 am, 11:30 am, 1:00 pm, 2:30 pm.
- Cash awards will be determined by the number of players.
- USCF membership required. Memberships will be processed the day of the tournament.

Medical: Please notify registration desk regarding potential medical issues with players.

Byes may be requested.

Students are encouraged to play as much chess as their schedules permits.

Inland Chess Academy A licensed, insured, 501c3 WA non-profit educational organization.

920 N. Argonne Rd., Suite 120, Spokane Valley, WA 99216 509-822-9800

chess@inlandchess.org

www.inlandchess.org

facebook.com/inlandchess

Cover image from StockCake.

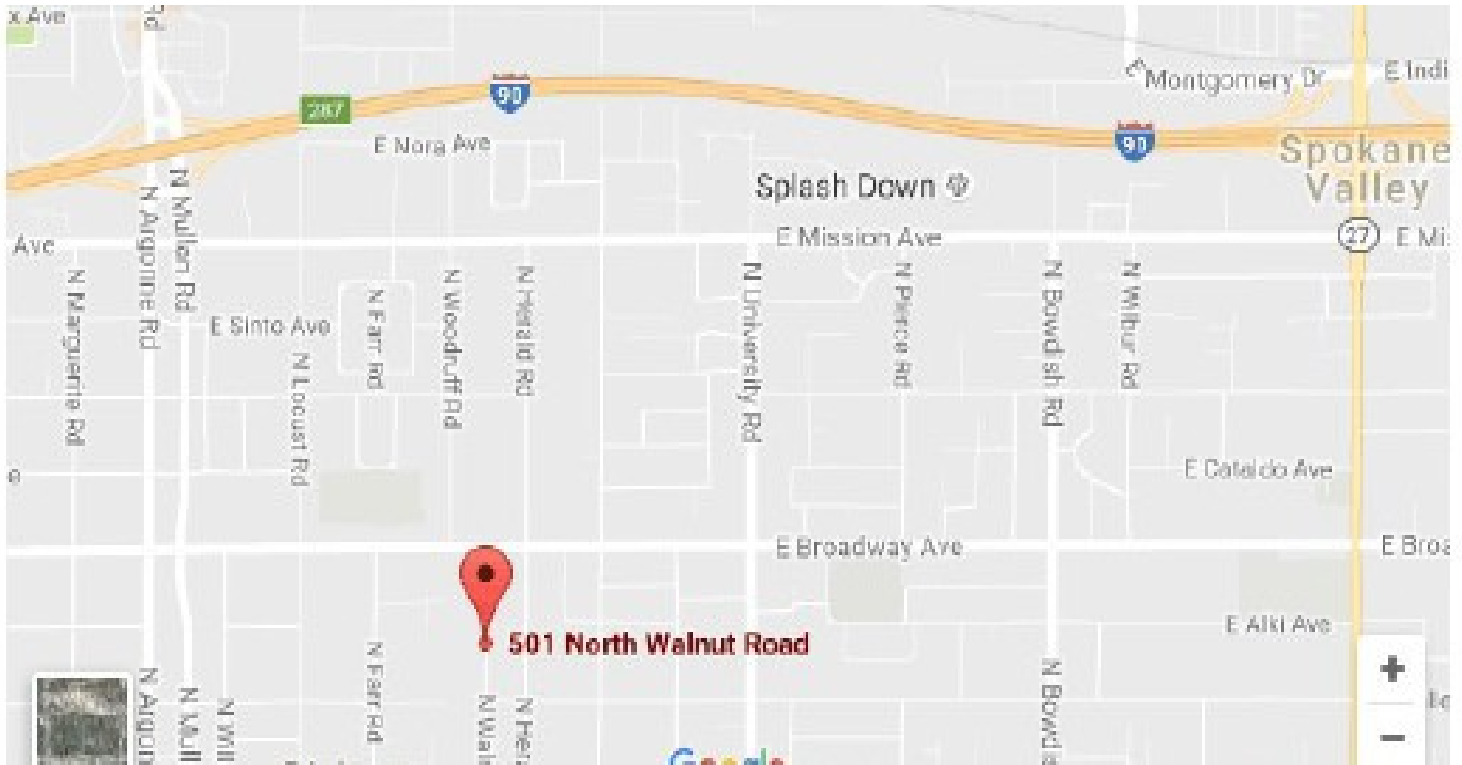


Notice: Tournament Details

Inland Chess Academy's tournament policies are found at the tournament director's table and on the Inland Chess website. Please consult that document before making complaints about our tournaments. That document will provide the procedures for submitting a formal complaint. The list of awards will be posted at the director's table before the first round begins.

St. John Vianney School

501 N Walnut Rd, Spokane Valley, WA 99212



Inland Chess Academy

See schedule of chess events for summer 2026 on the Inland Chess Academy's website and its Facebook page.

www.inlandchess.org

[www.Facebook.com/inlandchess](https://www.facebook.com/inlandchess)

Sign up for our email and chess news: play@inlandchess.org